

**October 2008**



## **Hurricane Ike Information**

-An Armstrong

Although many of our neighbors were without power for what seemed an eternity and many of our yards and homes sustained at least minor damage, the Woodland Heights seems to have returned to some semblance of normalcy following the landfall of Hurricane Ike. However, I continue to hear questions regarding various aspects of the recovery and have compiled a list of Hurricane Ike related information and resources:

### TREES:

Can they be saved?

"Some uprooted trees can be replanted and saved, but it depends on their size," says City of Houston forester Victor Cordova. "Smaller, 2- to 4-inch (trunk diameter) trees are the best candidates. Anything larger does not have a good chance of survival." You will, however, need to administer immediate first aid. "Be sure to plant the tree at the same depth as it was, make sure it is straight, and stake it," Cordova advises. "Then continue to water it on a weekly basis for the next two years." If you have large, not uprooted but damaged trees, the LSU Ag Center offers the following assessment:

#### **Your tree may recover if:**

- It was healthy and vigorous before the storm.
- At least half of the crown is intact.
- Remaining branches could form a new structure.

#### **The tree's likelihood of survival is slim if:**

- Major limbs or the leader (the main upward branch) are broken.
- It has large wounds, which make it vulnerable to diseases and pests.

#### **Let it go if:**

- The trunk is split.
- It was "topped," losing its crown.
- It only has a few branches left.
- It was too close to the house.
- It's not a good species for our climate.



Healthy, properly pruned trees weather storms better than weak ones. Water deeply during dry spells to lessen stress and encourage a deep, strong root system — a tree's anchor. And steer mowers and weed trimmers clear of trunks; wounds invite insects and disease.

Hire a certified arborist to prune trees selectively to allow wind passage, encourage strong branch angles and encourage a stable center of gravity. Varieties with stable, low centers of gravity and wide, spreading limbs, such as live oaks, hold their ground better in high winds than some other types. Trees planted in groups tend to survive storms better, too.

A high enough wind can topple any tree, of course. But forestry surveys frequently rate these varieties among the most wind-resistant: live oak, southern magnolia, saucer magnolia, crape myrtle, dahoon holly, American holly, yaupon holly, vitex or chaste tree, native fringe tree and redbud.

### DEBRIS PICKUP:

Beginning Monday, September 29, 2008, the Yard Waste Schedule has been modified in order for the department to "sweep" geographic areas. The City of Houston Solid Waste Management Department (SWMD) has dedicated its Yard Trimmings and Curbside Recycling crews to pick up the bagged vegetative storm debris and put it into rearloader trucks. The modified yard waste schedule is as follows:

- MONDAYS- Southwest Quadrant Area (all service days)
- TUESDAYS- Northwest Quadrant Area (all service days)
- WEDNESDAYS- areas not completed on Monday and Tuesday
- THURSDAYS- Northeast Quadrant Area (Except Kingwood) (all service days)
- FRIDAYS- Southeast Quadrant Area (Including Clear Lake) (all service days)
- SATURDAYS-Far Northeast Quadrant (Kingwood) (all service days)

**The City of Houston Solid Waste Management Department is urging Houston residents to place their small twigs, leaves and other light loose yard waste in a bag and place it on the curb (of a City street).** "By bagging the yard trimmings and light storm debris, our heavy trash crews can concentrate on getting the difficult, bulky items. This will help expedite the overall storm debris cleanup process," said Harry J. Hayes, Solid Waste Management Department Director. "It will also help reduce the loose debris which may clog ditches and storm sewers/drains," added Hayes. The rotation schedule (above) initially takes into account the areas of the city which generally have more bagged yard waste (SW and NW). These areas include all of the pilot areas for the city's tree waste recycling program and biodegradable bag programs. City forces will also provide bagged collection in areas that are under the City sponsorship agreements as called for by the City Debris Management Plan. In non-emergency operations, sponsorship areas are collected by private haulers.

The Heavy Trash Crews will be picking up the heavy loads such as tree stumps and large branches and placing them in the tractor-trailers.

It is estimated that Hurricane Ike generated a minimum of 5 million cubic yards of storm debris. Through Friday, September 26, 2008 noon, the City of Houston and its contractor have collected 985,248 cubic yards (24,550 truckloads) of storm debris.

### **STORM DEBRIS DROP-OFF LOCATIONS**

SWMD has opened its neighborhood depositories 7 days a week to accommodate small amounts of storm debris from Houston residents. One pickup truck load or less will be accepted. Hours of operations will be 9 a.m. to 7 p.m. Locations are:

- **NORTHEAST AREA** ... [5565 Kirkpatrick](#) ... 713-675-3208
- **NORTHWEST AREA** ... [6023 Windfern](#) ... 713-895- 1003
- **SOUTHEAST AREA** ... [2240 Central St.](#) ... 713-837-0311
- **SOUTH AREA** ... [5100 Sunbeam](#) ... 713-738-1936



HOMEOWNERS INSURANCE:

The Texas Department of Insurance offers the following tips for dealing with insurance claims stemming from storm damage:

Make a list of your damaged property and photograph or video the damage if possible.

Make reasonable and temporary repairs to protect your home and property from further damage. Cover broken windows and holes to keep rain out. Do not make permanent repairs before a claims adjuster inspects the damage. Keep a record of your repair expenses and save all receipts.

Try to be present when the adjuster inspects your damage. You may also have your contractor present at the inspection or have the contractor review the adjuster's report before settling the claim. If you haven't heard back from your insurance carrier, agent, or adjuster within a reasonable period of time, contact TDI.

Beware of fraudulent contractors. A disaster can bring out the best in people but also sometimes the worst. Beware of crooked building contractors or unlicensed public adjusters who may try to exploit the confusion and emergency conditions and swindle you and your insurance company. If you suspect fraud, call TDI's Fraud Hot Line toll-free at 1-888-327-8818.

If you need help recovering from Hurricane Ike, you should register with the Federal Emergency Management Agency (FEMA). Call 1-800-621-FEMA (3362) or register online at [www.fema.gov/assistance/register.shtm](http://www.fema.gov/assistance/register.shtm). Assistance is available in both English and Spanish. Additional information is available online on TDI's Hurricane Ike resource page: <http://www.tdi.state.tx.us/consumer/storms/cpmhurrike.html>

### St. Mark's Child Development Center Annual Silent Auction

—By Gretchen Himsl & Karen Smiley



St. Mark's CDC is hosting its 8<sup>th</sup> annual Silent Auction on Saturday, **October 18<sup>th</sup>** from 5:30—8:30 p.m. at 600 Pecore. The theme this year is Dia de los Muertos. Admission is \$20 per person and includes food, music and childcare. Auction items include: Photography package with Brooke Schwab photography, Houston Symphony tickets, classes at Joy Yoga Center, roundtrip tickets with Southwest Airlines, family membership at the Museum of Fine Arts, Saturday brunch at Benjy's. Please contact Gretchen Himsl at [Gretchen.himsl@gmail.com](mailto:Gretchen.himsl@gmail.com) (713-861-7260) or Karen Smiley at [smileytopp@comcast.net](mailto:smileytopp@comcast.net) (281-974-2228) for more information or to make a donation. Please plan to attend and support one of your neighborhood pre-schools.

### WHCA General Meeting Tuesday, October 14<sup>th</sup>

7:30—Zion Lutheran Church—3606 Beauchamp

Sharie Beale—"Historic District Designation"

### 2008 Habitat Highways Training Series: Creating and Restoring Habitats for Wildlife in Urban Settings

—By Chris LaChance

Every year, more and more natural areas are being turned into urban landscapes. Right now the national estimate is 40 million acres, or an area roughly the size of Pennsylvania. Wildlife habitats are being fragmented or even lost, leaving birds, butterflies and other creatures isolated with no place to turn for precious food, water and shelter. The good news is that our landscapes and green spaces can help to fill that gap by becoming habitat havens, creating ribbons of vibrant areas through which wildlife can continue their travels.

The Habitat Highways Training Series, in its second year, will continue to train advocates to create and restore wildlife habitats as a way to shorten the distances, or "connect-the-dots", between restored and existing habitats. As a project-focused group, participants will learn wildlife habitat basics, habitat landscape design and implementation, WaterSmart irrigation and rainwater harvesting for wildlife habitats, and eco-system specific landscape construction. Led by Chris LaChance of the WaterSmart Landscaping Program and Mark Bowen of Urban Harvest, the classes will be held on **October 9<sup>th</sup>, 14<sup>th</sup>, 21<sup>st</sup>, and 28<sup>th</sup>**, from 9:00 am— 3:30 pm each day at the United Way of Greater Houston, 50 Waugh Drive, Houston, 77007. Two hands-on classes will be held on **November 13<sup>th</sup> and 20<sup>th</sup>** at a location to be announced. Cost is \$150, including materials and space is limited. Participants must be prepared to attend each session. Help give wildlife uninterrupted travel along habitat corridors with the Habitat Highways initiative.

For more information, contact Chris LaChance at (281) 218-0721, [c-lachance@tamu.edu](mailto:c-lachance@tamu.edu) or go to [www.watersmart.cc](http://www.watersmart.cc).

### National Night Out

Come out and Meet Your Neighbors!

—By Chuck Britton, VP—Security

National Night Out is 6-8 pm, Tuesday, **October 7<sup>th</sup>**. Please bring non-perishable food items to assist with the Hurricane Ike relief effort.

Current party sites are:

414 Redan St.  
923 Redan St.  
Ley Plaza Park (White Oak & Gladys)  
1008 E. 7th St.  
418 Byrne St.



### Block Captains Needed!



**1000 Block Omar** (20 newsletters)—Contact Colleen Tautfest at [jcct05@yahoo.com](mailto:jcct05@yahoo.com)

**600 Block of Omar** (12 newsletters) OR **3700 Blocks of Bruce, Reagan & Bradley** (26 newsletters)—Contact Emily Guyre at [emily.guyre@sbcglobal.net](mailto:emily.guyre@sbcglobal.net)



## **Lights in the Heights® 2008**

—By Sharon Greiff, Co-Chair

The 2008 Lights in the Heights® will be held on Saturday, **December 13<sup>th</sup>** from 6:00—10:00 pm, along Woodland and Bayland Streets. It's another year of entertainment and lights; we are in the planning phase of the LITH event and need your help!

### ARTISTS:

Last year we had the most amazing design and we sold out of t-shirts – a LITH first. But we know there are artists out there who yearn to strut their stuff, in fact they want you to strut their stuff. So whether you are a professional graphics artist or a daytime doodler send us your designs! Got more questions? Give Sharon Greiff a call at 713-868-1579 or send her an email at [sharon@glassattraction.net](mailto:sharon@glassattraction.net). We need the designs by October 15<sup>th</sup>!

### CAPTAINS NEEDED:

**Esplanade Captain** — Arrange with City to have sound stage delivered, received and connected with power. Apply for use of Esplanade permit and sound permit. Contact Santa and photographer for Santa. Pre and Post cleanup. Work with Maps captain for what's where. Coordinate placement of booths day of the event.

**Signage Captain** — Responsible for getting all signage printed, distributed and posted on the route

### ENTERTAINMENT:

We want to make this our best LITH and are going to need more entertainers and porches than in previous years. You don't have to be a traditional band or a singer. Dancers, magicians, bell choirs – we love them all. If you plan on having your own entertainment and you are on the route please contact Dana so that we don't place a group too close to you.

**Entertainers**—Please contact Dana Loudon (713-922-3640; [LithEntertainment@msn.com](mailto:LithEntertainment@msn.com)) if you would like to provide entertainment.

**Porch/Yard**—Please contact Alan Harris (832-661-2819; [alan.harris@emersonprocess.com](mailto:alan.harris@emersonprocess.com)) if you would like to host entertainers on your porch or yard.

### PARADE:

Who doesn't love a parade? Please contact Michelle Gardner **713-868-5840**; [michelle.gardner@earthlink.net](mailto:michelle.gardner@earthlink.net)) if you have a group interested in participating.

**BAKING REQUEST:** Can we beat the 2007 10K Cookie Challenge? It's so much fun raising the bar but I think we can all agree, when it's hot outside it's hard to think about cooking a batch of cookies. Luckily the cookies aren't needed until the second Saturday in December. Last year, our Cookie Captain of many years, Ken Stefano, passed the 10K mark for cookies collected and distributed. So what do you all think, 11K? The top three bakers will get a LITH Apron! If you would like to take part in the 11K Challenge contact the Cookie Captain Kelli Fereday at [georgeandkelli@fereday.org](mailto:georgeandkelli@fereday.org) or **713-863-1914**. Keep in mind, most cookies can be baked ahead and frozen in gallon sized freezer bags, so there is no need to cram all your efforts into one week of furious baking before the holidays. Thank you in advance for your support of this wonderful neighborhood event!

## **2008 "Lighter in the Heights" 10/25/2008**

—By Emily Guyre, LITH Garage Sale Captain

Are you ready to clear out the garage and help support WH neighborhood events? Then look no further. The Woodland Heights Civic Association is sponsoring its 4th Annual "Lighter in the Heights" Garage Sale on Saturday, **October 25<sup>th</sup>**. (**notice this is a new date**). This year the LITH committee has set a goal to raise \$5,000, so we need your support to make this happen! This might even be a good opportunity to coordinate with your neighbors for a block garage sale! Proceeds will be used for street security during the 2008 Lights in the Heights® event.

Here's how it works: Contact **Emily Guyre** at [emily.guyre@sbcglobal.net](mailto:emily.guyre@sbcglobal.net) or (832) 723-0560 if you would like to participate. I will provide you with a sign-up form that asks you to indicate how much of your sales you will donate to LITH (minimum 20%) and whether you want to have your "leftovers" picked up by a not-for-profit group. We will be advertising in the Houston Chronicle, the Greensheet, on Craig's List, on the Infoline, and on the WH website. On the day of the event, we will post signs, mark participating homes with balloons, and hand out route maps. We hope that the 2008 "Lighter in the Heights" neighborhood garage sale will build on the success of the previous year's sales and become a traditional Woodland Heights fundraising event. Remember that we have set a pretty significant goal, so we need your help! If you are interested, please let me know. I can be reached at (832) **723-0560** or [emily.guyre@sbcglobal.net](mailto:emily.guyre@sbcglobal.net). Thank you in advance for your support.

**Next LITH Meetings**  
10/16 and 10/30 at 7:30pm  
Suzanne Anderson Properties  
741 E. 11th



## Minimum Lot Size and Minimum Building Line Ordinances

-By Sharon Greiff

You've probably heard about two ordinances via the Woodland Heights web site, info line, newsletter and multiple articles in the Houston Chronicle. The ordinances prevent lots from being divided smaller than the minimum lot size defined for that block and new/remodeled construction from encroaching past the minimum front building line. If you have a property more or less within the minimums don't worry – you are grandfathered in – you will not need to move your house or purchase or sell property. What this does mean is that no single property owner can ask for a variance without a public meeting and without presenting their case to the Planning Commission.

How do the two ordinances help the neighborhood? The biggest impact the ordinances have are on density and encroachment. Woodland Heights was designed to "house" just so many people and it has a very suburban feel to it, with its front yards and trees. Usually when a lot is split, two huge town homes, built to the property lines, replace the bungalow or cottage that was there. The new homes do not match the style of houses that surround them and rarely have a front yard; the garage is right in front of the house and the driveway takes up almost the entire front. We've already seen the huge town homes with the front garage entrances proliferate and take over Montrose and the Memorial area. They've also begun to spring up in Houston Heights and we've even had one or two built in Woodland Heights.

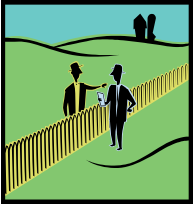
Currently, an astounding 60% of the neighborhood is protected by the Minimum Lot Size ordinance but we need help getting the rest of our qualifying blocks protected. I'll do all the paperwork, the measuring and research – all you need to do is get 51% of your block to sign the petition. Below is a list of blocks that need your help; if you live on one of these blocks and want to get a petition started please give me a call at 713-868-1579 or email me, [sharon@glassattraction.net](mailto:sharon@glassattraction.net)

Street	Block	Side
--------	-------	------

Euclid	900	Even
Florence	2700	Even
Gladys	600	Even
Highland	300	Both
Highland	500	
Houston	2800	Even
Merrill	400-600	
Merrill	600	Even
Merrill	700	Odd
Morrison	3200-3300	Even
North	100	Both
Omar	600	
Omar	800	Both
Omar	900	Both
Omar	1100	Both
Pecore	700	Even
Reagan	3700	Both
Redan	400-600	Both
Stude	1000	Odd
Teetshorn	200-400	
Usener	700	Odd
Usener	900	Odd
Voight	1000-1100	Both
Wendel	700	Even
White Oak	1700	
White Oak	2000	Both
White Oak	2400	Both
Woodland	200	Both
Woodland	300	Both
Woodland	700	Both
Wrightwood	400	Both

Street	Block	Side
--------	-------	------

Bayland	300	Both
Bayland	400	Both
Beauchamp	2900-3100	Even
Beauchamp	3200-3300	Even
Beauchamp	2700	Both
Bruce	3700	Odd
Byrne	200	Even
Byrne	700	
Byrne	800	Even
Byrne	900	Even
Euclid	600	Both
Euclid	800	Both
Euclid	900	Odd



## WHCA Membership Drive

—By Vicky Bettis, VP—Membership

As of September 9, 2008 514 households have submitted dues and contributions totaling \$22,910.00 exceeding last year comparables by \$895 by 518 residents.

Our goal is to break last year's record of \$26,395 contributed by 618 residents. To reach that goal, it is imperative that you forward your dues as soon as possible. You can use the form provided in this newsletter or go to [www.woodland-heights.org](http://www.woodland-heights.org) and click on our pay pal link.

Regarding the generous residents who have joined to date, below are our Super Neighbors for September. Thanks to each and every one of you!

John & Melissa Hagan  
Theodore Carpenter Jr.  
Kathleen Jackson Sandefer  
W. Paul Kellogg & Robin Curtis  
Dennis & Leslie Waltman  
Beth Martin & Walter Baile

## WHCA Newsletter Accepts Sponsors

—By An Armstrong, VP—Newsletter Sponsorship

Monthly sponsorship fees are \$50/month for a 1.75 x 3 inch (approximately business card size) sponsorships/promotions block. The WHCA Board will review all applications for sponsorship. Individuals interested in becoming WH Newsletter sponsors, should contact the WH Newsletter Sponsorship VP, An Armstrong at [newsletter@woodland-heights.org](mailto:newsletter@woodland-heights.org) for further details and pricing for larger blocks. Checks are payable to the Woodland Heights Civic Association, P.O. Box 7754, Houston, TX, 77270-7754.



## CALENDAR

October 6	Heavy Trash, E. of Watson
October 7	<b>National Night Out</b>
October 13	Recycling
October 13	Heavy Trash, W. of Watson
October 14	<b>WH General Board Meeting</b>
October 25	<b>St. Mark's Silent Auction</b>
October 27	Recycling
November 3	Heavy Trash, E. of Watson
November 10	Recycling
November 10	Heavy Trash, W. of Watson

## Woodland Heights Newsletter

The Woodland Heights Newsletter is a publication of the Woodland Heights Civic Association (WHCA), and seeks to keep the community informed of board activities and developments of interest to area residents.

**WHCA General Meetings** are held the **second Tuesday** of every month (except June, July, August and December). Unless otherwise noted, meetings are located in the meeting room at Zion Lutheran Church, 3606 Beauchamp.

### WHCA Contact Information

P.O. Box 7754  
Houston, TX 77270-7754  
**Tel: 713-683-5188**  
Website: [woodland-heights.org](http://woodland-heights.org)

### WHCA Board Members

#### Adrian Reed, President

Email: [president@woodland-heights.org](mailto:president@woodland-heights.org)  
Tel: (713) 863-8592

#### Louise Moss, Secretary

Email: [recorder@woodland-heights.org](mailto:recorder@woodland-heights.org)  
Tel: (713) 880-0060

#### Randall Ellis, Treasurer

Email: [treasurer@woodland-heights.org](mailto:treasurer@woodland-heights.org)  
Tel: (832) 797-6416

#### An Armstrong, VP, Newsletter Sponsorship

Email: [newsletter@woodland-heights.org](mailto:newsletter@woodland-heights.org)  
Tel: (832) 202-5372

#### Vicky Bettis, VP, Membership

Email: [membership@woodland-heights.org](mailto:membership@woodland-heights.org)  
Tel: 713-397-9336

#### Anthony Marré, VP, Deed Restrictions I

Email: [deed\\_restrictions@woodland-heights.org](mailto:deed_restrictions@woodland-heights.org)  
Tel: (713) 598-6430

#### Tony Maluski, VP, Deed Restrictions II Infrastructure I

Email: [deed\\_restrictions2@woodland-heights.org](mailto:deed_restrictions2@woodland-heights.org)  
Tel: (713) 528-8822

#### Matt Emal, VP, Infrastructure II

Email: [vpinfrastructureii@woodland-heights.org](mailto:vpinfrastructureii@woodland-heights.org)  
Tel: (713) 337-0068

#### Chuck Britton, VP, Security

Email: [security@woodland-heights.org](mailto:security@woodland-heights.org)  
Tel: (713) 869-8176

**Thank You to Our Sponsors!**

**DAY PLLC**  
 BUSINESS LITIGATION & COUNSELING

*Local  
 Effective  
 Fair*

1100 Studewood St. (832) 673-0220  
 (above Dacapo's) jday@daypllc.com



**Mac In The Heights**  
 Angela Peek

1109 Rutland  
 Houston, Tx 77008  
 713.504.1345  
 angela@macintheheights.com



**FOUR PAWS DOGGIE DAYCARE**  
 come have a dog good time

contact@4paws4dogs.com  
 www.4paws4dogs.com

3202 Houston St.  
 713-868-7585

**kaboom books**

Houston's Most Mobile Used Bookstore  
 fiction-literature  
 social & physical sciences  
 history - out-of-print - scholarly books  
 kaboombooks@sbcglobal.net  
 www.kaboombooks.com

3116 Houston Ave Houston, Tx 77009 713-869-7600  
 733 Studewood Houston, Tx 77007 713-869-1700

Noon to 8 daily

**J Tallichet Landscape Design**  
 Specializing In Habitat Gardens



**Janet Tallichet**  
 713-459-5308  
 637 W. 20th Street  
 Houston, TX 77008

Consultation • Design & Installation • Organic Solutions



**WHCA Membership Form**  
 Membership Year April 1, 2008 to March 31, 2009

Mail to: **Woodland Heights Civic Association, P.O. Box 7754, Houston, TX 77270-7754**

Name(s) \_\_\_\_\_

Address \_\_\_\_\_

Home phone \_\_\_\_\_ Daytime phone \_\_\_\_\_

E-mail Address \_\_\_\_\_

New Member? (Circle One) YES NO

Please check the appropriate space:    \_\_\_ Homeowner - \$35 \_\_\_ Senior (60+) Homeowner - \$10 \_\_\_ Renter - \$10  
     \_\_\_ Friend of Woodland Heights — Non-resident — Any amount

**I want to make an additional contribution to the Civic Association of \$ \_\_\_\_\_**